



Scraps

'59



# FORWARD

"All are architects of Fate,  
Working in these walls of Time;  
Some with massive deeds and great.  
Some with ornaments of rhyme.  
For the structure that we raise,  
Time is with materials filled;  
Our todays and yesterdays  
Are the blocks with which we build."

Henry Wadsworth Longfellow

One cannot help but be impressed by the structural symmetry of the new Rye Neck High School. The long graceful lines, the magnificently landscaped exterior, the marvelous athletic fields and the graceful, natural wooded surroundings all add to the overall beauty. No less resplendent is the interior of the school. It is appointed in living colors and equipped with the finest modern furnishings. But the "structure that we raise" cannot be measured alone by physical beauty, or even by intellectual cleverness. Spiritual beauty is perhaps the truest beauty in our school, and it provides a basis of unity. We are new and fresh. The class of 1959 as the first graduating class of this school, sincerely hopes that the "todays and yesterdays" which we have used to build traditions will create "massive deeds and great" for those who will follow.





# SENIORS

# A - 8



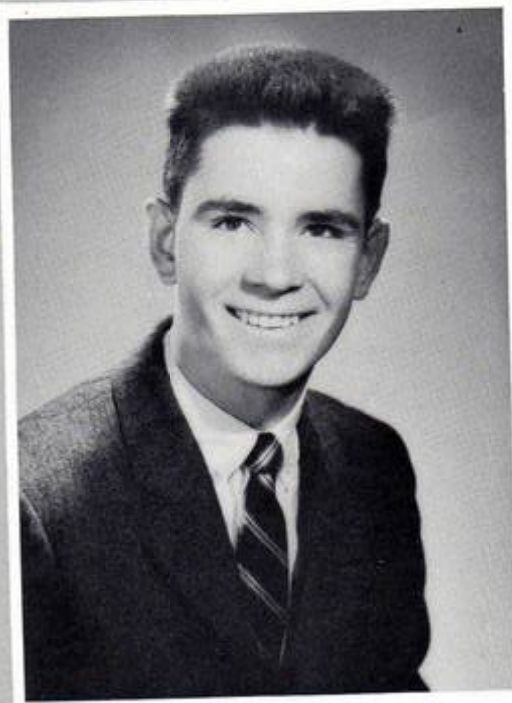




**PRESIDENT**

**RONALD THOMAS CRISP**

Football 1; Frolic; Pres. Homeroom 2; Vice Pres. Junior Class; Prom; Pres. Senior Class; SCRAPS Staff 4.



**VICE-PRESIDENT**

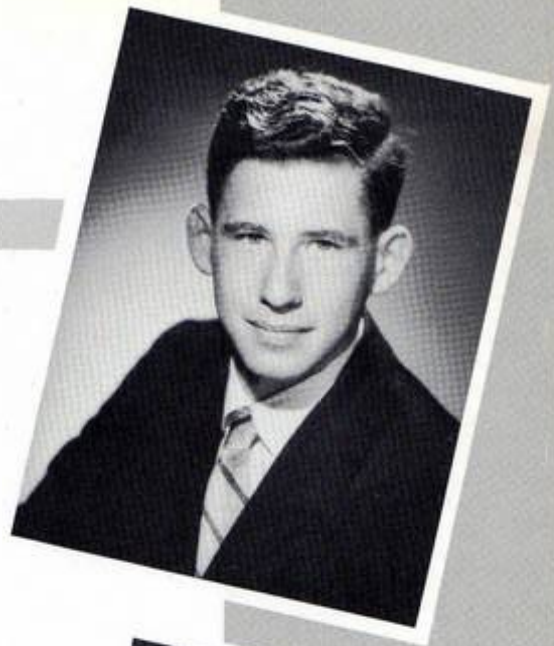
**ROBERT MERCER BYSSHE**

Library Squad 1, 2, 3, 4; Homeroom Sec.; Vice-Pres., Literature and Forum Club 1; Radio Club 1, 2; Co-Chair. Frolic; Intramurals 1; Honor Volleyball team 1; Glee Club 1, 2, 3, Vice-Pres. 4; Basketball 2; Chess Club 2, Vice-Pres. 3; Baseball 2, 3, 4; Soccer 3; Prom 3; Varsity Club 3, 4; Teenage Code 3; G. O. 3, 4, permanent rep. 4; Vice-Pres. Senior Class; Stage Manager Senior Play; SCRAPS 4; National Honor Society 4.

**TREASURER**

**ROGER SIRLIN**

G. O. 1, 3; Literature and Forum Club 1, Radio Club 1; Frolic 1; Projection Club 2, 3, Vice-Pres. 4; Chess Club 2; Hop 2; Prom 3; STUDENT OBSERVER 3; Soccer 3, 4; Teenage Code Comm. 3; Motion picture Council 4; Treas. of the Senior Class; National Honor Society 4; Chairman Clubs Comm. for SCRAPS 4.



**RECORDING SECRETARY**

**BARBARA JO ARAGONA**

Intramurals 1, 2, 3, 4; Glee Club 1; Frolic 1, Hop 2; Future Nurses Club 2, 3; Leaders Club 2; Calendar Planning Comm. 2; PANTHER'S TALE 3, Typing Editor 3; Prom 3; Cheerleader Jr.-Sr. Game 3; Waitress-Senior Day 3; Senior Play; SCRAPS 4, Typing Editor; Christmas Card Comm. 4; Refreshment Comm. 4; Recording Secretary, Senior Class.



**CORRESPONDING SECRETARY**

**MARY JACQUELINE MOEN**

Transferred from St. Gabriel's High School in Sophomore Year; Dramatics Club 2, 3, 4; Future Nurses Club 2, 3, 4; Pres. 2, 3; Hop 2, Entertainment; Spring Prod. 2, Make-up; Intramurals 2, 3; PANTHER'S TALE 3, 4; Prom 3; Spanish Club; Senior Play Cast; Motion Picture Council 4; Corres. Sec. Senior Class; SCRAPS STAFF 4; Christmas Card Comm. 4; Refreshment Comm. 4.







**DAVID R. ARMSTRONG**

Student Observer 1, 2, 3; Radio Club Pres. 1, 2; Frolic; Science Club 2; Pres. 2; Glee Club 2, 3, 4; Baseball Mgr. 2; Chess Club 2, 3; Varsity Club 3, 4; Soccer Mgr. 3; Prom 3; Calendar Planning Comm. 2; National Honor Society 3, Treas. 4; Vice-Pres. G. O. 4; Math Seminar 4; Forum Club 4; Motion Picture Council 4; Senior Play 4; Editor, SCRAPs 4.

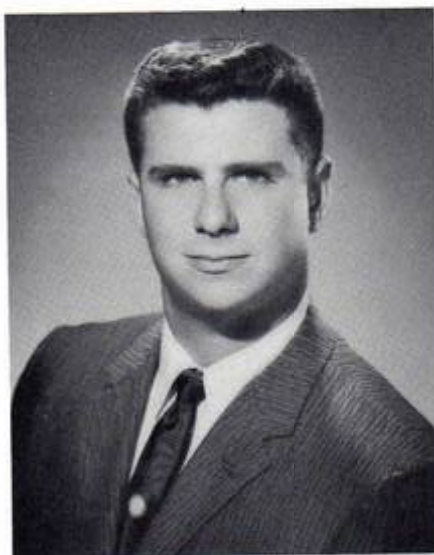
**VIRGINIA EDITH BLACK**

Literature and Forum Club 1; Frolic 1; Sr. Glee Club 1; Intramurals 1, 2, 3, 4; Dramatics Club 2, 3, 4; Hop 2; Leaders Club 3, 4; Prom 3; Red Cross 4; Christmas Card Comm. 4; Football Programs Comm. 4; Senior Play, Usher.



**JACQUELINE BENNETT**

Frolic 1, Chairman Refreshments; STUDENT OBSERVER 1; Intramurals 1, 2, 3; Honor Volleyball Team 1, Manager; School Cashier 2, 3; Senior Play, Makeup; Refreshment Comm. 4; SCRAPs 4.



**MICHAEL MORRIS BLUESTONE**

Glee Club 1; Senior Band 1, 2; Basketball, manager 1; Frolic 1; Soccer 1, 2, 3; Intramurals 1, 2, 3; Honor Volleyball Team 1; Varsity Club 2, 3, 4; Prom 3; Sr. Dramatics 4; Co-chair., Sr. Class Refresh. Comm. 4; Chair, Underclassmen sect., SCRAPs 4; National Honor Society 4.

**MARGO LOUISE BERGEN**

Intramurals 1, 2; Leaders Club 3, 4; Glee Club 1, 2; Dramatics Club 1, 2, 3, 4; Frolic 1; Hop 2; Red Cross 2; Prom 3; Treas., Red Cross 2; LETTERS TO LUCERNE 2, Cast; Sr. Ring Comm. 3; Football programs, Chairman 4; Chair, Publicity, Co-Chair. Props, Programs, Senior Play 4; SCRAPs 4; Waitress-Senior Day 3.





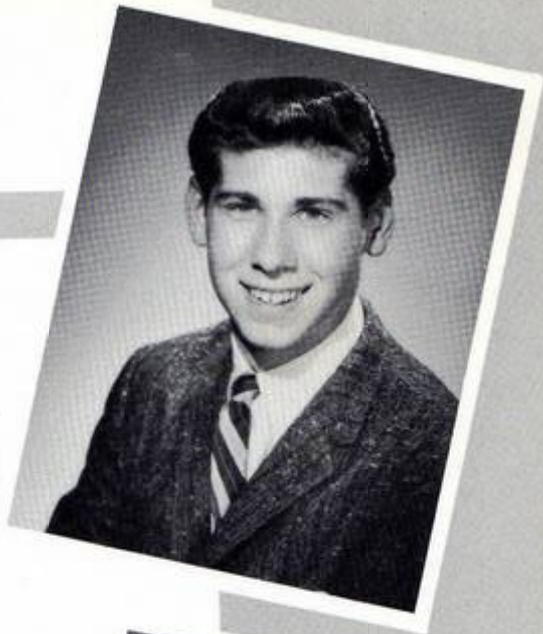
**JOANNE A. BURGHEIMER**

Intramurals 1, 2, 3, 4; Frolic 1; Leaders Club 2, 3, 4; Hop 2; Future Majorettes Club 2; Cheerleader, Leaders Club-Faculty Game 2; Class Tea 2; Junior Red Cross 3, 4, Sec. 4; Jr.-Sr. Game 3; Senior Play 4; Head usher; Refreshment Comm. 4; SCRAPS 4.



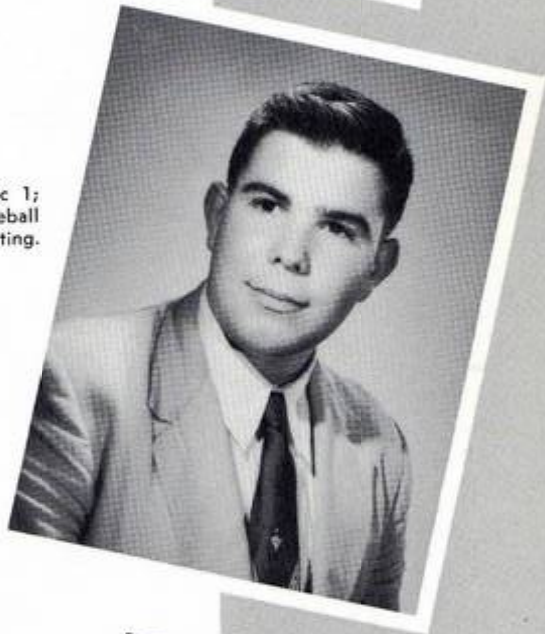
**RICHARD S. CLARK**

Intramurals 1, 2, 3, 4; Radio Club 1; Railroad Club 1; Frolic 1; Track 1, 2; Calendar Planning Comm. 1; Varsity Club 2, 3, 4; Soccer 2; Hop 2; Prom 3; Senior Play, Stage Crew; Dramatics Club 4; Motion Picture Council 4; SCRAPS STAFF 4.



**MARK CROWN**

Railroad Club 1; Glee Club 1; Frolic 1; Projection Club 1, 2, 3, 4; Hop 2; Baseball 2; Prom 3; Senior Play, Stage Crew, lighting.



**CHRISTIAN GEORGE CASTILLO**

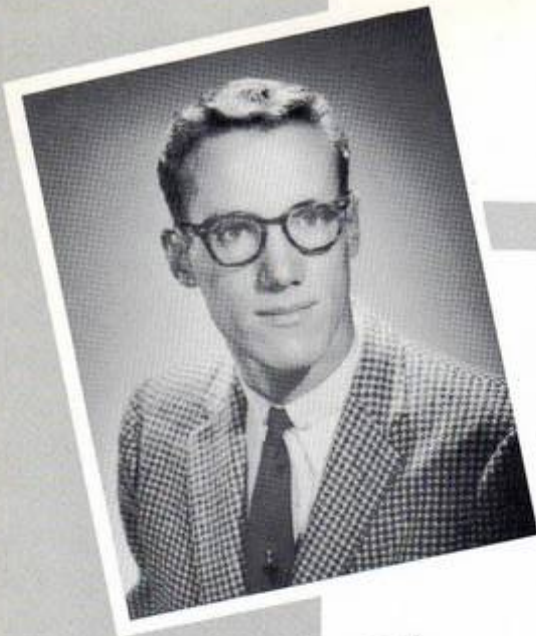
Transferred from Commerce High School in New York City; Prom 3; Senior Play 4, Stage Crew; Christmas Card Comm. 4; SCRAPS 4.



**CAROLE LOUISE DALY**

Transferred from Semple School in New York City in Sophomore year. Dramatics Club 2, 3; Spring Production 2, Cast; Hop 2; Prom 3; Football Programs Comm. 4; Senior play, Cast; SCRAPS STAFF 4.



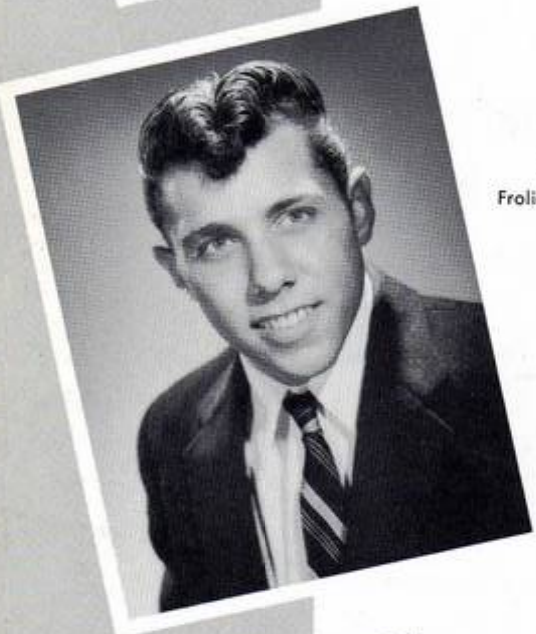


**HENRY BENEDICT DAVENPORT**

Football 1, 2, 3; Varsity Club 1, 2, 3, 4; Glee Club 1, 2, 3, 4; Senior Band 1, 2; Science Club 1; Frolic 1; Intramurals 1, 2, 3; Library Squad 1; Track 2, 3, 4; The Esquires 2, 3; Hop 2; Radio Club 2; Chair. Band Comm., Prom 3; Senior Play, sound effects Chair; Motion Picture Council 4; SCRAPS STAFF 4.

**DIANA MARIE DOERN**

Intramurals 1, 2, 3, 4; G. O. Rep. 1, 2, 3; Junior Red Cross 1, 2, 3, 4; Vice Pres. 4; Frolic 1, Co-Chair.; Glee Club 1, 2, 3; Sec. Homeroom 1; Leaders Club 2, 3, 4; Field Hockey Honor Team 2, 3, 4; Hop 2; Cheerleader 3, 4, Captain 4; Prom 3; SCRAPS 4. Senior play, Stage Crew.



**ROBERT JAMES DeFONCE**

Frolic 1; Hop 2; Football 2; Prom 3.



**MARTHA WARD DOUGHTY**

Intramurals 1, 2, 3, 4; Honor Team 1, 2, 3; STUDENT OBSERVER 1, 2, 3, 4; Library Squad 1, 2, 3, 4; Dramatics Club 2, 3, 4; Spring Production, Props manager 2; SCRAPS Staff 4; Refreshment Comm. 4; Prom 3; Senior Play, Cast; Ch. Christmas Card Comm. 4.



**NICHOLAS A. DiLALLO**



### MAURICE WILLIAM FORMAN

Transferred to Rye Neck in September of Sophomore year from Columbia Grammar School; Track 2, 3, 4; Science Club 2; Chess Club 2, 3; Spanish Club 3; PANTHER'S TALE, News Editor 3, Associate Editor 4; Varsity Club 4; Senior Forum Club 4; Dramatics Club 3, 4; SCRAPS Staff 4.



### DAWN FROST

Jr. Red Cross 1; Frolic 1; Hop 2; Prom 3; STUDENT OBSERVER 3; Intramurals 3; Jr.-Sr. Game 3, Cheerleader; Refreshment Comm. 4; Senior Play, Make-up, tickets; Christmas Card Comm. 4; Dramatics Club 4; SCRAPS STAFF 4.



### RONNE-MAE GOLDMAN

Leaders Club 2, 3, 4, Pres. 4; Glee Club 1; Dramatics Club 1, 2, 3, 4; Intramurals 1, 2, 3, 4; Hockey Honor Teams 2, 3, 4; Basketball Honor Team 2, 3, 4; Volleyball Honor Team 2; Future Nurses' Club 3; Jr.-Sr. Game 3; Prom 3; Senior Play, Make-up; Refreshment Comm. 4; SCRAPS STAFF 4.



### GORM FRILING

Foreign Exchange Student from Copenhagen, Denmark; (Student Observer) PANTHER'S TALE 4; Soccer 4; SCRAPS STAFF 4.

### GILL R. GOODMAN

Transferred from Elizabeth Irwin High School, N.Y.C. in Soph. year; Football 2; Basketball 2, 3, 4; Baseball 2, 3, 4; Hop 2; Prom 3; Soccer 4; National Honor Society 4; Football Programs, co-chairman 4; Varsity Club 4; Advanced Math. Seminar 4; Motion Picture Council 4; Senior Play, Tickets; SCRAPS STAFF 4.





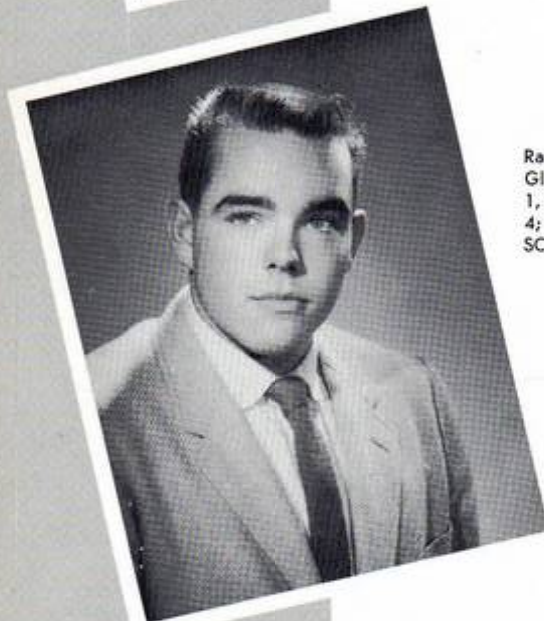


**CHARLES STUART GREENE**

Glee Club 1, 2, 3, Sec. 4; Clean-up Chairman, Frolic 1; Chess Club 2, 3, 4; Clean-up Chairman, Hop 2; Track 2, 3, 4; Prom Treas. 3; National Honor Society 3, 4; Soccer 3, 4; Forum Club 4; Motion Picture Council 4; Co-Chairman of Sr. Class Refreshment Comm. 4;

**WERNER HARSCH**

Chess Club 1, 2, 3, 4; Science Fair Club 3; French Club 3; Science Fair 3; STUDENT OBSERVER 3; Forum Club 4.



**WILLIAM CURRENT HANCE**

Railroad Club 1; Science Club 1; Frolic 1; Glee Club 1; Intramurals 1, 2, 3; Football 1, 4; Hop 2; Baseball 3, 4; Prom 3; G. O. 4; Varsity Club 4; Dramatics Club 4; SCRAPS Staff 4.



**CORINNE JOAN HAVILAND**

Library Squad 1, 2, 3, 4; Frolic 1; Band 1, 2, 3; Glee Club 1, 2, 3, 4; Orchestra 1, 2, 3, 4; Hop 2; Future Nurses' Club 2, 3, 4; Sec., Soph class; Prom 3; Motion Picture Council 4; Christmas Card Comm. 4; Refreshment Comm. 4; Senior Play, Usher; Red Cross 4; SCRAPS STAFF 4.



**JILL HARRAN**

Transferred from A. B. Davis High School in September of Junior year; French Club 3; Intramurals 3; Prom 3; Usher at graduation 3; Honor basketball team 3; Senior play, tickets; SCRAPS Staff 4.



### BARBARA ELLEN HURLEY

Intramurals 1, 2, 3, 4; Dramatics Club 1, 2, 3, 4; Glee Club 1, 2, 3; Senior Band 1, 2, 3, 4; Librarian 3, Pres. Orchestra 3, 4; Frolic 1, Entertainment Ch.; Hop 2, Entertainment Ch.; Prom 3, Decoration Ch.; Jr.-Sr. Game 3; Christmas Card Ch. 4; National Honor Society 4; Senior Play, Cast; SCRAPS Staff 4.



### CHARLOTTE KAHN

Frolic 1; Literature and Forum Club 1; Intramurals 1, 2; Dramatics Club 2, 3, 4; . . . Hop 3; Spanish Club 3; Future Nurses' Club 3; Prom 3; SCRAPS STAFF 4; Refreshment Comm. 4; Christmas Card Comm. 4; Senior play, Make-up.



### BJORN H. KARLSSON

Foreign Exchange Student from Kungsbacka, Sweden; THE PANTHER'S TALE 4; SCRAPS STAFF 4; G. O. 4; Senior Play, Stage Crew.



### JUNE ROSE JORDAN

Intramurals 1, 2, 3, 4; Leaders Club 2; Dramatics Club 1, 2, 3, 4; Senior Band 1, 2, 3, 4; Glee Club 1, 2, 3; Orchestra 1; Red Cross Rep. 1; Library Squad 1, 2, 3, 4; Frolic 1; Hop 2; Prom 3; Waitress, Sr. Day 3; Senior Play, Ticket chairman; Co-Circulation Editor, SCRAPS 4; Jr.-Sr. Game 3; Motion Picture Council 4.



### SUZANNE DIANA HOWE KENT

Intramurals 1, 2, 3, 4; Honor Teams 2, 3, 4; Leaders Club 2, 3, 4; Vice-Pres. 3, Seasonal Manager 4; Glee Club 1, 2, 4; French Club 3; Cheerleader 3, 4; Senior Play, Usher; SCRAPS STAFF 4.





**RICHARD LAURENCE KNOFF**

Baseball 1, 2, 3, 4; Football 1, 2, 3, 4; Basketball 2, 3, 4; Varsity Club 2, 3, 4, Sec. 4; Homeroom Pres. 1; Radio Club 1; Railroad Club 1; Frolic 1; Hop 2; Prom 3; Library Squad 1, 2, 3; Ch. Sports, SCRAPS; Senior Play, Stage Crew.

**JOHN FRANK LAUR**

Literature and Forum Club 1; Frolic 1; Track 1, 2, 3, 4; Intramurals 1, 2, 3, 4; Hop 2; Prom 3.



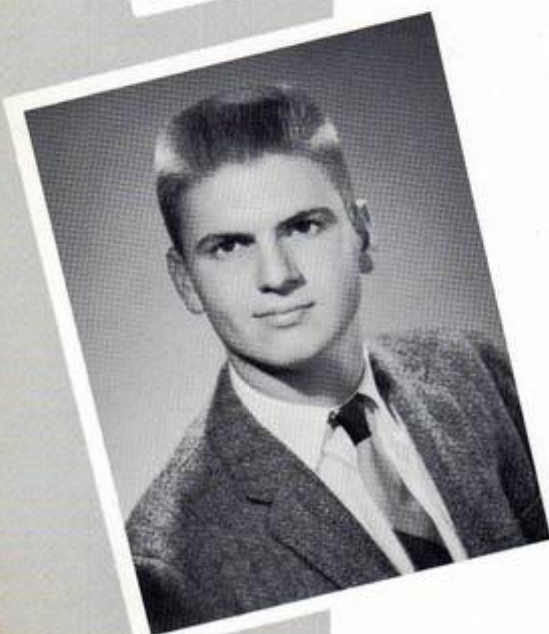
**DOROTHY ANN KRELL**

Intramurals 1, 2, 3, 4; Honor Teams 2, 3; Leaders Club 3; Dramatics Club 1, 2, 3, 4; Glee Club 1, 2, 3, 4; Literature and Forum Club 1; Red Cross Rep. 2; Future Nurses' Club 2; Future Teachers' Club 2; Frolic 1; Hop 2; Prom 3; "Letters to Lucerne", Usher 2; STUDENT OBSERVER 3; Spanish Club 3; Jr.-Sr. Game 3; Honor Society 4; Co-Advertising Editor, SCRAPS 4; Ch. Football Programs 4; Senior Play, Cast.



**EDITH LYNNE LIEBERMAN**

Literature and Forum Club 1; Intramurals 1, 2, 3, 4; Glee Club 1; Ninth Grade Tea, Chairman; Frolic 1; Hop 2; Prom 3; G. O. Dance 1, 2; G. O. Representative 2; Dramatics Club 2, 3, 4; Stage Crew 1, 2, 3, 4; Future Teachers' Club 3; Spanish Club 3; Waitress, Sr. Day 3; Senior Play, Usher; SCRAPS STAFF 4.



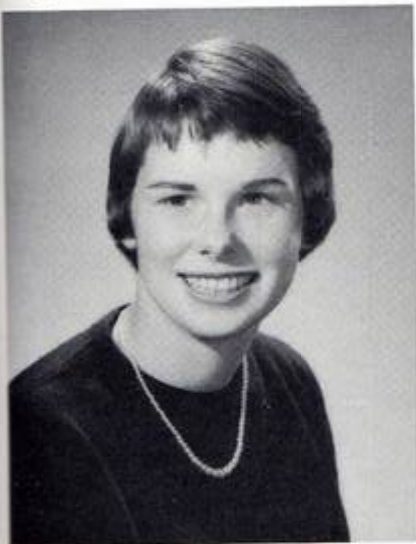
**WILLIAM JOHN LANDSIEDEL**

Basketball 1, 2, 3, 4; Radio Club 1; Science Club 1; Track 1, 2, 3, 4; Frolic 1; Hop 2; Varsity Club 3, 4; Prom 3; G. O. 4; Dramatics Club 4; Motion Picture Council 4; SCRAPS 4; Football 2, 3, 4.



**KATHLEEN A. LURHS**

Intramurals 1, 2, 3, 4; Dramatics Club 1, 2, 3, 4; Library Squad 1, 2, 3, 4; STUDENT OBSERVER 1, 2, 3, Advertising Editor 3; Leaders Club 3; Cheerleader 3, 4; Frolic 1; Hop 2; Prom 3; Waitress, Sr. Day 3; G. O. Representative 4; Senior Play, Tickets; Co-Circulation Editor, SCRAPs 4; Motion Picture Council 4.



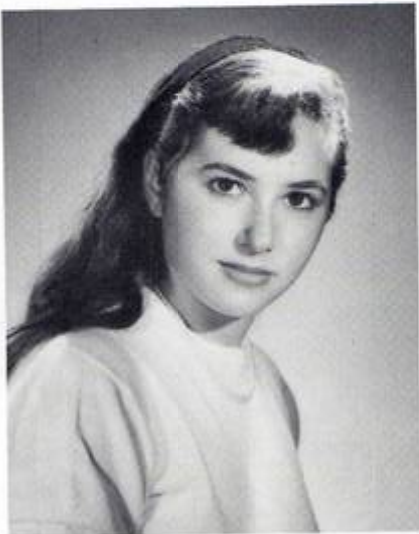
**EDWARD JOSEPH MAHRLIG, JR.**

Football 1, 2, 3, 4; Ninth Grade Basketball and Track Teams; Projection Club 1, 2, 3, Pres. 4; Frolic 1; Basketball 2, 3; Track 2, 3, 4; Varsity Club 2, 3, 4; Hop 2; Prom 3; SCRAPs 4.



**RICHARD VAHAN MANOUKIAN**

Basketball 1, 2, 3, 4; Science Club 1; Radio Club 1; Frolic 1; Railroad Club 1; STUDENT OBSERVER Photographer; Intramurals 1, 2, 4; Chess Club 2; Hop 2; Glee Club Librarian 2, 3, Pres. 4; Prom 3; Motion Picture Council 4; Senior Play, Cast; Photography Chairman, SCRAPs 4.

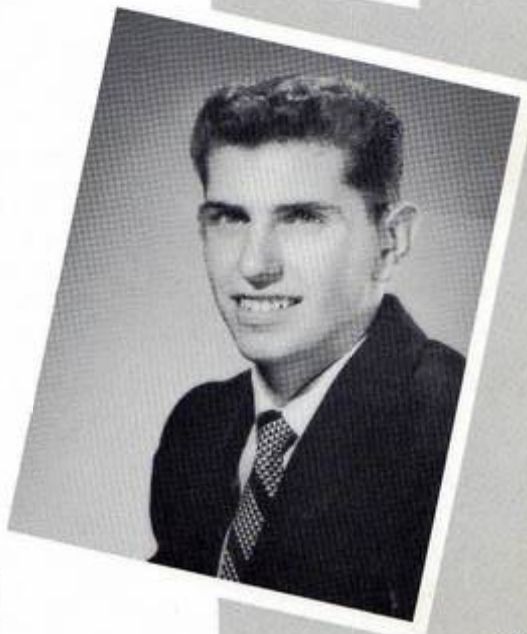


**RUTH ELISE LURIE**

STUDENT OBSERVER 1, 2, 3, 4; Layout Editor 2; Production Editor 3, Editor-in-Chief 4; Frolic 1, Decoration Ch.; Spring Production, Cast 2; Dramatics Club 1, 2, 3, 4; Hop 2; Glee Club 2, 4; Mixed Glee Club 3; Hockey Honor Team 2; Library Squad 1, 2, 3, 4; SCRIPTS 2, 3, Co-Editor 2; Prom Co-Chairman 3; STUDENT OBSERVER dance 3, Co-Ch.; Liaison Committee 3; National Honor Society 3, 4, Sec. 4; Exchange Student to Germany 3; SCRAPs STAFF 4.

**LOUIS SALVATORE MARCIANTE**

Photography Club 1, 2; Projection Club 1, 2, 3, 4; Football 1, 2, 3, 4; Baseball 1, 2, 3, 4; Ninth Grade Basketball; Basketball 2, 3, 4; Homeroom Pres. 1; Literature and Forum Club 1; Varsity Club 2, 3, 4; Pres. Junior Class; Prom, Master of Ceremonies 3; SCRAPs STAFF 4.





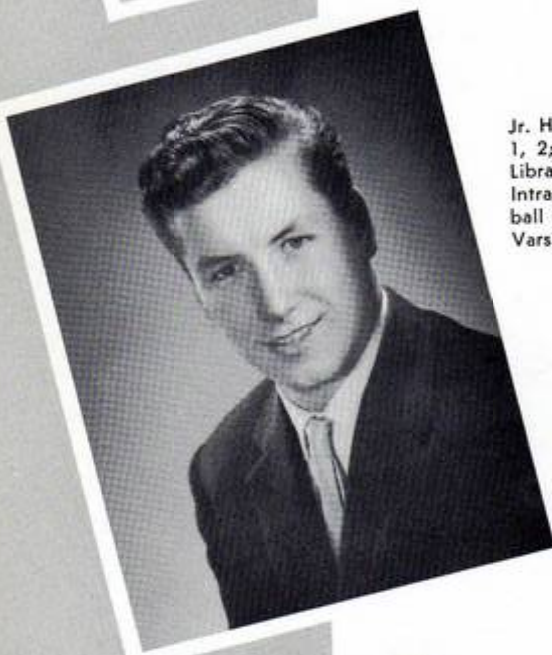
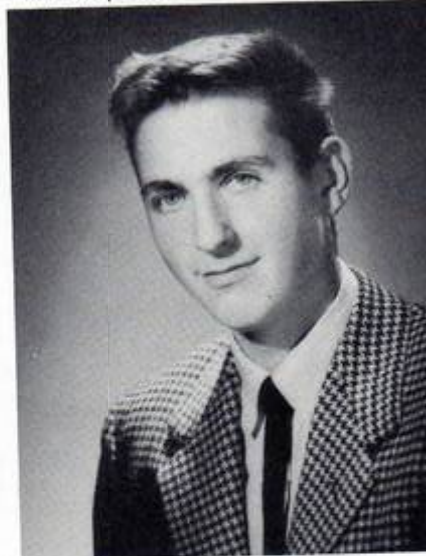


**MARION ANN McCAFFREY**

Transferred from Resurrection Academy in Sophomore year . . . Hop 2; Future Nurses' Club 2, 3; Dramatics Club 2, 3, 4; Intramurals 2, 3, 4; Cheerleader 3, 4, Co-captain 4; STUDENT OBSERVER 3; Prom 3; Basketball Honor Team 3; Jr.-Sr. Game 3; Usher for Graduation 3; Senior Play, make-up, tickets; Christmas Card Comm. 4; Motion Picture Council 4; SCRAPS STAFF 4.

**THOMAS T. MORTON**

Hop 2; Soccer 2, 3, 4, Captain 4; All-County Soccer Team 4; Band 2; Glee Club 2; Prom 3; "Esquires" Dance Band 3, 4; Varsity Club 3, 4; Senior Forum Club 4; Advanced Math Seminar 4; Film Council Chairman 4; Christmas Wrap Chairman 4.



**JAMES McMAHON**

Jr. High Basketball 1; G. O. Representative 1, 2; Literature and Forum Club, Pres. 1; Library Squad 1, 2, 3, 4; Football 1, 2, 4; Intramurals 1, 2; Basketball 2, 3, 4; Baseball 3, 4; Prom, Ch. of Furniture Comm. 3; Varsity Club 4; Advanced Math Seminar 4.



**DONALD MOTHNER**

Transferred from Hasley Junior High School in September of Sophomore year; Basketball 2, 3; Chess Club 2; Science Club 2; Hop 2; Soccer 3, 4; Student Observer 3; Prom 3; Forum 4, Vice Pres.; Advanced Math Seminar 4; G. O. Representative 4; SCRAPS STAFF 4.



**HAROLD MESSINA**

Transferred from Miami, Florida, in Senior Year. Football 4; Chess Club 4; Varsity Club 4.



**JUDITH LEE MULLEN**

Intramurals 1, 2, 3, 4; Future Nurses' Club 2, 3; Prom 3; Red Cross Volunteer 3, 4; Glee Club 4; SCRAPS STAFF 4; Senior Play, Usher.



**INES ROSE MARY PANARO**

Stage Crew 1; Intramurals 1, 2; Hop 2; Future Nurses' Club 3; Prom 3.



**JOSEPH MICHAEL PASTORE**

Literature Club 1; Football 1, 2, 3; Freshman Frolic, Ways and Means Chairman; Intramurals 1, 2, 3, 4; Dramatics Club 2, 3, Pres. 4; Hop 2; Prom 3; Refreshment Committee 4; Senior Forum Club 4; Senior Play; SCRAPS STAFF 4.



**ALICE R. O'CONNELL**

Literature and Forum Club 1; Dramatics Club 1, 2, 3, 4; Glee Club 1; Frolic 1; Intramurals 1, 2, 3, 4; Hop 2; Spanish Club 3; Future Nurses' Club 3; Red Cross Nursing 4; Prom 3; Jr.-Sr. Game 3; Refreshment Comm. 4; SCRAPS STAFF 4.



**WILLIAM EDWARD PELTON**

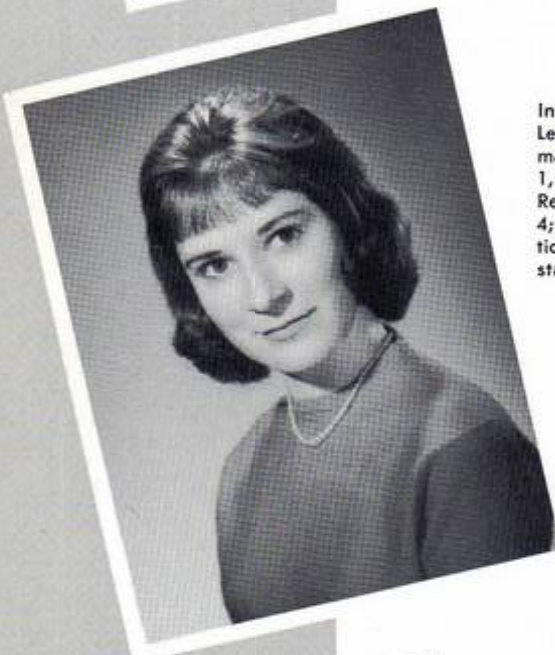
Railroad Club, Pres. 1; Radio Club, Vice-Pres. 1, 2; Homeroom Pres. 1; STUDENT OBSERVER 1; Science Club 1, 2; Frolic 1; Hop 2; Intramurals 2, 3; Basketball 2, 3; Track 2, 3, 4; Varsity Club 3, 4, Vice-Pres. 4; Glee Club 2, 3; Pres., Sophomore Class 2; Prom, Chairman 3; National Honor Society 4; Sr. Play, Cast 4; SCRAPS STAFF 4.





**VANESSA ROBERTA POPP**

Intramurals 1, 2, 3, 4; Honor Teams 1, 2, 3, 4; STUDENT OBSERVER 1; Dramatics Club 1, 3, 4; Jr. Red Cross, Pres. 1; Frolic 1; Sophomore Tea; Hop 2; Leaders' Club 3, 4; Spanish Club 3; Future Nurses' Club 3; SCRAPS staff 4; Senior Play, Tickets; Refreshment Comm. 4; Christmas Card Comm. 4.



**JOANNA MARION RAWSON**

Intramurals 1, 2, 3, 4; Honor team 3, 4; Leaders' Club 2, 3, 4; Glee Club 1; Dramatics Club 1, 2, 3, 4, Sec. 3; Senior Band 1, 2, 3; Frolic 1; Hop Co-chairman 2; G. O. Representative 2; STUDENT OBSERVER 3, 4; Prom, chairman of Programs and Invitations comm. 3; Treas., Jr. Class 3; SCRAPS staff 4; Senior Play, Properties chairman.



**RANDI LIE SACHS**

Transferred from Mamaroneck Jr. High in September of Sophomore year. Dramatics Club 2, 3, 4; Spring Production, Cast 2; Future Majorettes Club 2; Freshmen-Sophomore tea 2; Spanish Club, Vice Pres. 3; Cheerleader at Jr.-Sr. Game 3; Senior play, cast; Refreshment comm. Co-chairman 4; National Honor Society 4; SCRAPS, Associate Editor 4; Motion Picture Council 4.



**LOIS ROBERTO**

Intramurals 1, 2, 3; Frolic 1; Hop 2; Prom 3; Usher for graduation 3; Jr.-Sr. Game 3; SCRAPS staff 4.

**ALLAN DAVID ROSEN**

Frolic 1; Track 1; Intramurals 1, 2, 3, 4; Ninth grade basketball team 1; Glee Club 1, 2, 3; Vice-Pres. Freshman homeroom; Photography Club 1; Hop 2; Prom 3; Spanish Club, Sec. 3; Projection Club 3, 4; Refreshment comm. 4; Sr. Forum Club 4; Sr. Play, stage crew and lighting; SCRAPS staff 4.





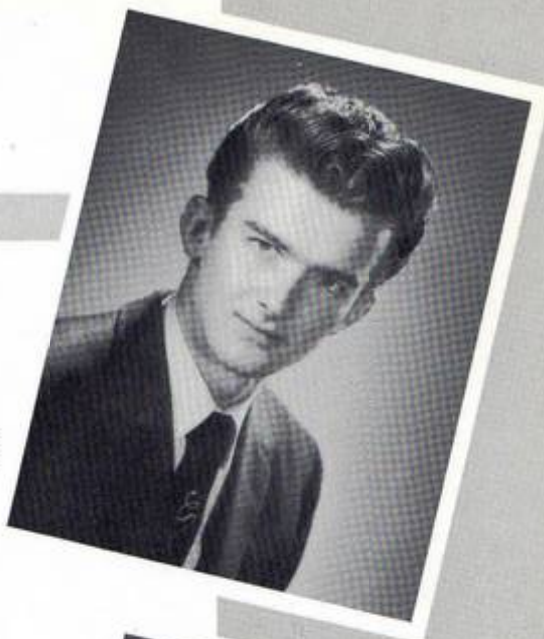
**ERIC L. SANDSTROM**

Transferred from Stockholm, Sweden in Junior year; Chess Club 3, 4; SCRAPS staff 4.



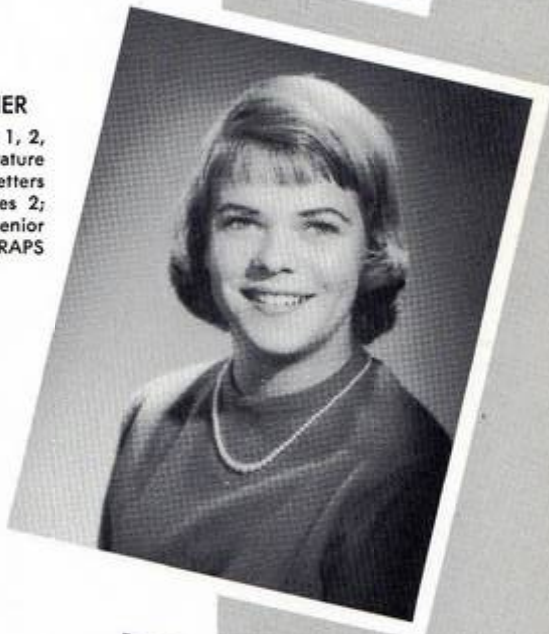
**FREDERICK SCHNEIDER**

Transferred from Levittown Memorial High School, Levittown, Long Island in Junior Year; Stage crew, Senior play 4.



**CAROL FRIEDEL SCHUMACHER**

Intramurals 1, 2, 3, 4; Dramatics Club 1, 2, 3, 4; Glee Club 1, 2, 3; Frolic 1; Literature and Forum Club 1; Hop 2; Prom 3; "Letters to Lucerne", co-chairman of properties 2; Leaders Club 3, 4; Cheerleader 4; Senior play, properties and publicity 4; SCRAPS staff 4.



**BARBARA JEAN SCHLOTTER**

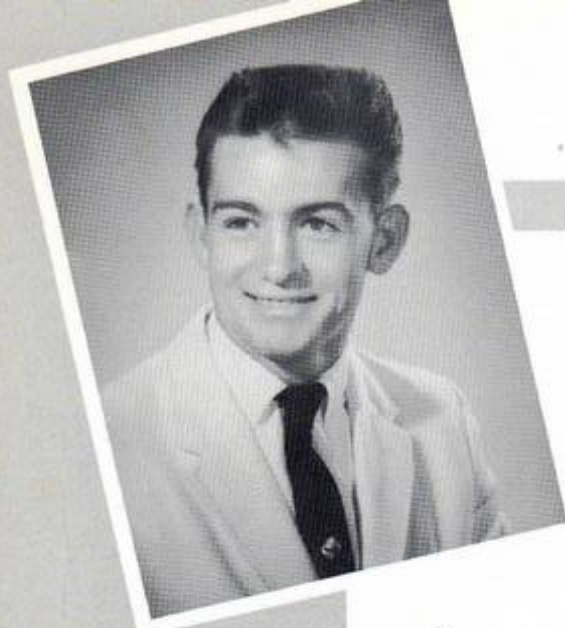
Frolic 1; G. O. Dance 1, 2; Intramurals 1, 3, 4; Hop 2; Dramatics Club 2, 3, 4; Stage crew 2, 3, 4; Future Nurses' Club 2, 3; Sec-Treas. Red Cross 2; Prom 3; STUDENT OBSERVER 3; STUDENT OBSERVER Dance 3; Spanish Club 3; Co-advertising Manager for SCRAPS 4; Christmas card comm. 4; Senior play, Tickets.

**FRANCES JANE SHONGUT**

Intramurals 1, 2, 3, 4; STUDENT OBSERVER 1, 2, Social Editor 2; Dramatics Club 1, 2, 3, 4; Frolic 1; Spring Production 1, Cast; Sock Hop, Ways & Means chairman 2; Future Nurses' Club 2, 3; Hop, Refreshment Chairman 2; Prom 3; Senior ring committee 3; Usher at Graduation 3; G. O. Representative 3; chairman of G. O. ticket comm.; Cheerleader for Jr.-Sr. Game 3; Senior play, usher; SCRAPS staff 4.







**JOHN JOSEPH SMITH**

Transferred from Archbishop Stepinac High School in September of Sophomore Year. Football 2, 3, 4; Baseball 2, 3, 4, Captain 4; Dramatics Club 2; Intramurals 2, 3; Prom 3; Varsity Club 4.

**LOIS ANNE SUTTON**

Dramatics Club 1, 2, 3, 4; PANTHER'S TALE 1, 2, 3; Circulation Editor 2; Typing Editor 3; Frolic, Chairman Publicity; Hop, Chairman Publicity; Prom; Programs, Senior Play; Motion Picture Council 4; Honor Society 4; Art Editor, SCRAPS 4; Refreshment comm. 4.



**PAUL TODD STRAYER**

Senior Band 1, 2, 4; Glee Club 1; Science Club 1; Varsity Soccer 1, 2, 3, Co-Captain 3; All County Soccer 2, 3; the Esquires 1, 2, 3; Frolic 1; Hop 2; Printing Club 2; Basketball 2; Varsity Club 2, 3, 4; Prom 3; Track 3; Student Liaison 3; SCRAPS STAFF 4.



**RONALD LANZA**

Basketball Intramurals 1, 2, 3, 4; Freshman Frolic 1; Stage Crew 1, 2; Hop 2; Prom 3.



**JOHN SUTPHEN**

Soccer 3, 4; Baseball 3, 4; Prom 3; Ring Committee 3; All County Soccer Team 3, 4; Dramatics Club 4; Forum Club 4; Motion Picture Council 4; Senior Play Stage Crew.



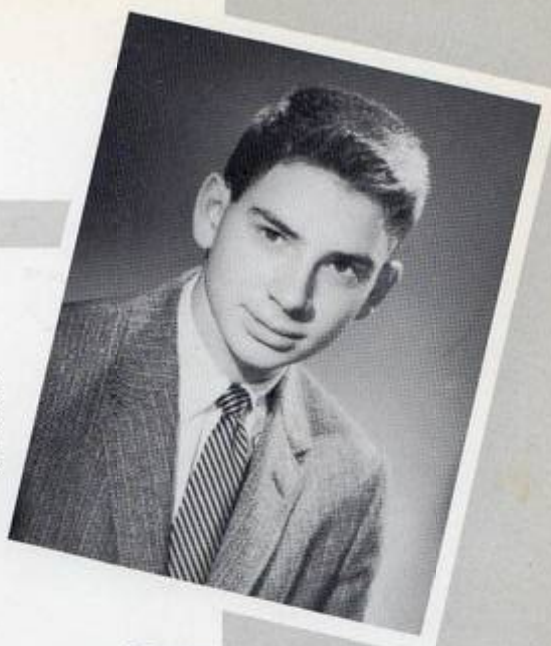
**MARY LOU VERRATTI**

Intramurals 1, 2, 3, 4; Homeroom Sec. 1; Dramatics Club 1, 2, 4; Frolic; Hop; Ch. of Ways and Means; Hockey Honor Team 2, Sec. of Junior Class; Usher at Graduation G. O. Ticket Committee 3; Prom, Entertainment; Basketball honor team 3; PANTHER'S TALE 4; Usher at Senior Play 4; SCRAPS Staff 4.



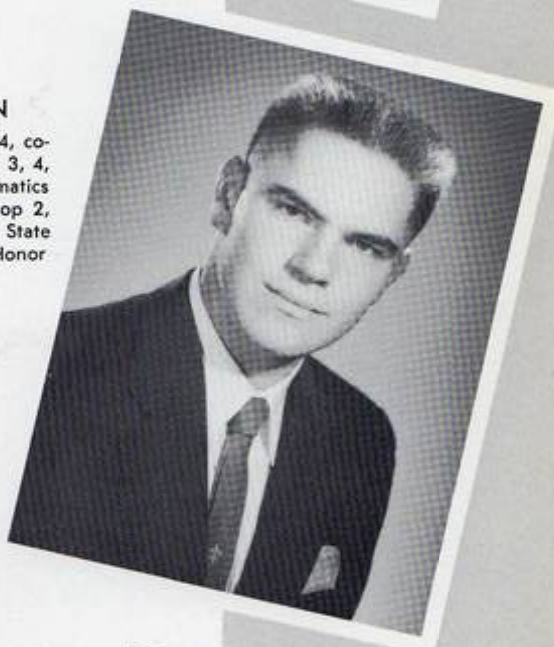
**STANLEY JOSEPH WARNOW**

Railroad Club 1; Science Club 1, 2; Hop 2; Mgr. of Soccer Team 3; Dramatics Club 3, 4; STUDENT OBSERVER 3, Sports Editor; PANTHER'S TALE 4, Associate Editor; Senior Play, Cast; Prom 3; Refreshment Comm. 4; Forum Club 4.



**JAMES RICHARD WARREN**

Intramurals 1, 2, 4; Football 1, 2, 3, 4, co-captain; Track 2, 3, 4; Varsity Club 2, 3, 4, Pres. 4; Senior Band 1, 2, 3, 4; Dramatics Club 3, 4; Radio Club 1, Frolic 1; Hop 2, Ch. Ways and Means; Prom 3; Boys' State 3; G. O. President 4; National Honor Society 4; SCRAPS Staff 4.



**AUDREY DOROTHY VINET**

Intramurals 1, 2, 3, 4; Dramatics Club 1, 2, 3, 4; Glee Club 1; Future Nurses' Club 1; Jr. Red Cross, Pres. 2, 3; Frolic; Hop; Prom; Future Majorettes Club 2; Future Teachers' Club 3, Pres. 3; Majorette 3, 4, Head 4; Ch. Costumes, Senior Play; PANTHER'S TALE 4; SCRAPS STAFF 4.

**ELIZABETH ANN WELDEN**

Intramurals 1, 2, 3, 4; Honor Teams 2, 3, 4; Leaders Club 2, 3, 4; Glee Club 1, 2, 3, 4; Senior Band 1, 2, 3, 4; Librarian 2, 3; Dramatics Club 1, 2, 3, 4; Homeroom Vice-Pres. 1; Cast, THE BOOR 1; Frolic; Hop; Prom, Ch. Entertainment; Cast, LETTERS TO LUCERNE 2; Orchestra 2, 3; Pres. 2; Jr.-Sr. Game Captain 3; National Honor Society 3, 4, Pres. 4; Ch. Costumes, Senior Play 4; SCRAPS Staff 4.





### JOANNE JOYCE ZINGLER

Dramatics Club 1, 2, 3, 4; Frolic; Intramurals 1, 2, 3, 4; Library Squad 1, 2, 3, 4; Hop 2; Stage Crew, Make-up, Spring Production 2; Student Observer 3; Future Nurses Club 3; Red Cross Volunteer 3, 4; Prom 3; Ch. Senior Ring Committee 3; Senior Play Make-up 4; G. O. Representative 4; Refreshment Committee 4; SCRAPs Ch. Senior Notes 4; Christmas Card Committee 4; Motion Picture Council 4.



### ALEATER WILLIAMS

Glee Club 1, 2; Intramurals 1, 2; Basketball Honor Team 2; Hop 2, Entertainment; Cheerleader Junior-Senior Game 3; Prom 3, Entertainment; Dramatics Club 4; Usher Senior Play; SCRAPs STAFF 4.

### JOYCE DIANE ZIMMERMAN

Transferred from Mamaroneck Junior High School, September, 1956; Band 2, 3, 4; Glee Club 2, 3, 4; Future Nurses Club 2, 3; Future Teachers' Club 2; Hop 2; Hockey Honor Team 2, 3, 4; Intramurals 2, 3, 4; Basketball Honor Team 3; Jr.-Sr. Game 3; Prom 3; Leaders Club 4; SCRAPs staff 4; Senior Play, tickets.



### EDWARD RAYMOND PATTERSON

Transferred from Hammond High in Virginia in middle of Sophomore year. Intramurals 2, 3, 4; Baseball 2, 3, 4; Co-captain Football 3, 4; Prom 3, Cleanup Chairman; Varsity Club 4; Dramatics Club 4; Senior Play, Stage Crew.

### NORMAN ZIMMERMAN

G. O. Parliamentarian 1; Radio Club 1; Literature and Forum Club 1; Glee Club 1, 2, 3, 4; Honorable Mention, Future Scientists of America Contest 1, first prize 3; Westchester Science Fair 1, 2, Honorable Mention 3; Frolic 1; Spring Production 1, 2; Science Club, Vice-Pres. 2, Pres. 3; STUDENT OBSERVER 2, 3; Dramatics Club 2, 3, 4; Chemistry Club 2, 3, 4; Hop 2; Westchester Cancer Society Contest, Hon. Mention 2, 3; French Club 3; Prom 3; Advanced Math Club 3, 4; Debating Club 4; SCRAPs Staff 4; National Honor Society 4.



# CANDIDS





## MAJORETTES

The highsteppers of Rye Neck . . . keep your chin up Girls and let's have some zest . . . What legs! . . . Oops! I threw the baton too high . . . heads, everyone.



L. to R. — R. Russell, C. Delap, C. Gares, L. Amoroso, C. Palmer, A. Vinet (head).

## BAND

Hail, hail the band's all here! . . . Marching practice Tuesday! . . . Let's get some life into the music! . . . Instruments up! . . . are you ready, Miss Vinet? . . . Our Alma Mater to rock 'n roll? . . . So, we're not professionals! . . . Mr. Henry.



Row 1: L. to R. — E. Delap, R. Russell, A. Vinet (Head majorette), C. Palmer, L. Amoroso, C. Gares. Row 2: J. Giancola, B. Robertson, J. Horvath, R. Grannells, F. Schrader, R. Kehr. Row 3: B. Gifford, A. Welden, J. Zimmerman, B. Landsiedel, H. Weiss, J. Serber, B. Miller. Row 4: L. Jordan, B. Ilkouski, D. Gifford, R.



## CHEERLEADERS



Bottom Row L to R. — P. Castaldo, S. Kent, D. Doern, (Head); B. Healey, J. Eller. Row 2: K. Luhrs, D. Gifford, M. McCaffrey, E. Siano, I. Carpino.

Adorable new uniforms . . . T-E-A-M, yeah team . . . When's Practice? . . . Lots of new cheers . . . new jumps, too . . . Game today . . . Oh, those aching muscles . . . taxis to away games . . . which jump are we using . . . short and cute. Everyone eat her Wheaties this morning? . . . Cheer for . . . That's not the middle of the floor! . . . Miss Grossman.



L. to R. — Castaldo, D. Doern (Head); K. Luhrs, S. Kent, D. Gifford, E. Siano, M. McCaffrey, B. Healey, I. Carpino, J. Eller.

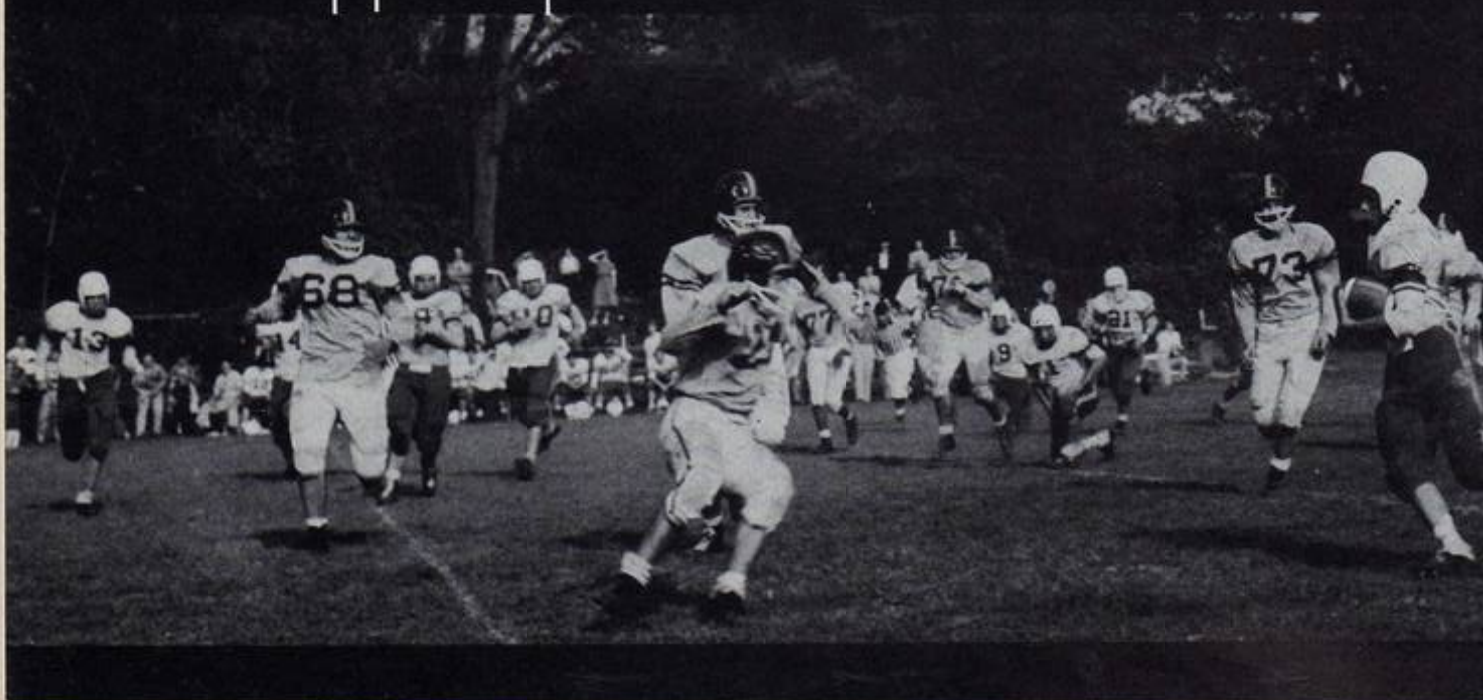




GYM

SPORTS

BOYS









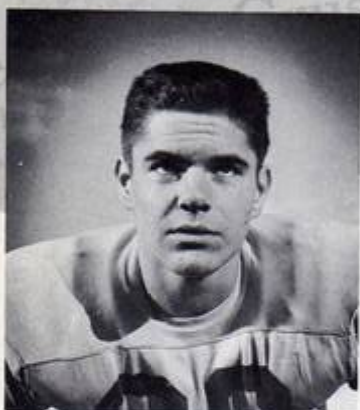
COACH SNIADACK,  
OUR COACH OF THE YEAR



COACH O'NEILL,  
GREATEST LINE COACH



## FOOTBALL



JIM WARREN,  
OUR ALL COUNTY TACKLE

The 1958 editors of the Rye Neck High football team experienced the most successful season in 23 years.

The first two games of the season proved to be very close. The Panthers beat Lakeland in the season's opener 14 to 7 and then next went on to beat Alexander Hamilton, 13 to 6. Rye Neck really began to come around against Edgemont and took a commanding 25 to 7 victory. Then came the highlight of the season, a 28 to 6 drubbing of previously unbeaten Bronxville. The game was even more one-sided than the score indicated, as the Broncos were held to net gain of minus 16 yards. The last two games of the season found the Panthers bombing Tuckahoe and Dobbs Ferry, 32 to 13 and 32 to 6 to complete the first undefeated season since 1935.

Much of the credit for our fine season goes to our wonderful coaches. Without them none of this could have been accomplished.



BUD PATTERSON,  
THE SPARK OF OUR TEAM,



VARSITY FOOTBALL: Row 1: J. McMahon, R. Knopf, B. Landsiedel, B. Hance, J. Warren, B. Patterson, L. Marciante, H. Messina, J. Smith. Row 2: Coach O'Neill, M. Carrington, D. Acebal, D. Brown, N. Kay, M. Brown,

P. Hoerber, J. Smirga, R. Hyra, Coach Sniadack. Row 3: E. McCulloch, B. Fitts, P. Grandstaff, B. Quinn, M. Wild, G. Gillette, P. Stern, Missing: L. Schmookler, E. Mahrlig.





**RICHE KNOPF,**  
HARD DRIVING HALFBACK



**JOHNNY SMITH**  
A SMALL PACKAGE OF DYNAMITE



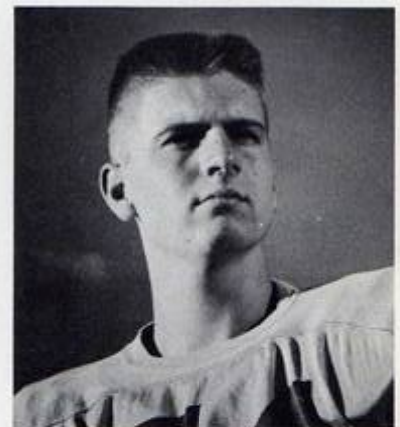
**LOU MARCIANTE,**  
A FINE RUNNING HALFBACK



**ED MAHRLIG,**  
OUR ROUGH TACKLE

**UNDEFEATED SEASON**

Rye Neck 14	.....	Lakeland	7
Rye Neck 13	.....	Elmsford	6
Rye Neck 25	.....	Edgemont	7
Rye Neck 28	.....	Bronxville	6
Rye Neck 32	.....	Tuckahoe	6
Rye Neck 32	.....	Dobbs Ferry	13



**BILL LANDSIEDEL,**  
OUR STURDY CENTER



**HAL MESSINA,**  
BLOCKBUSTING FULLBACK



**BILL HANCE,**  
DEFENSIVE STALWART



**JIM McMAHON,**  
A GLUE-FINGERED END

**FRESHMAN FOOTBALL:** Row 1: L. Giancola, E. David, J. Simon, E. Walker, P. Stockmann, E. Tolle, C. Rigano. Row 2: J. Puritz, T. Hoerber, P. Liver, H. Polcek, D. Woodworth, P. Brehmer, H. Deals. Row 3: G. Mahrlig, R. Iannarelli, J. Stockmann, Coach Dougherty.







SOCCKER TEAM: Row 1: R. Sirlin, G. Friling, A. Martelli, C. Greene, T. Morton, J. Sutphen, D. Mothner, G. Goodman. Row 2: M. Krieger, F. Kreitschitz, D. Natchez, J. Granett, J. Chen, G. Szanto, J. Horvath, J. Duggan, R. Fink, R. Nickson, E. Gunther, J. Eller, B. Samela. Row 3: Coach

Hasley, J. Ostrander, R. Litchfield, M. McGaughey, W. Becker, W. Petzold, G. Bysshe, N. Rosenblum, W. Schonfeld, J. David, P. Ernst, A. Seelenfreund, J. Paulson, C. Clarkson.

## SOCCKER—1958

Once again Rye Neck High School showed itself to be master of the soccer field. Under the superb coaching of Mr. Hasley, the 1958 varsity soccer team had the best record of any soccer team in Westchester County. Excellent play and great spirit were responsible for a final tally of 9 wins, 1 loss, and 2 ties.

This year soccer at Rye Neck was different from previous years in two ways. In the first place, home games were played on the fine new field at our wonderful new school. Secondly, the system of scoring was changed. All goals now counted 2 points except those resulting from penalty kicks (1 point).

The Panthers opened the season with a wonderful 10-0 win over Brunswick, followed by 5-2 victory over Concordia Prep. The following game proved to be one of the most exciting when Scarsdale's comeback in the third quarter resulted in a 6-6 tie. Then, in another close contest, the Rye Neck booters nipped Sleepy Hollow, 3-2. After winning easily over Bronxville, Ossining, and White Plains, the team

edged out Bronxville, 2-1, to beat this formidable opponent a second time. After a smashing 13-0 victory in the second game with Ossining, Rye Neck came to another deadlock (2-2) with the Scarsdale team. The next to the last game put a tragic end to the winning streak. In the third quarter Sleepy Hollow scored the only goal of the game on a free kick to win, 2-0. The second game with Brunswick was the last game of the season and also the fiftieth varsity soccer game ever played by Rye Neck. In this game the Panthers shut out the Greenwich team with a colossal 14-0 score.

Next season Coach Hasley will lose Tom Morton, John Sutphen, Charlie Greene, Don Mothner, Gil Goodman, and Tony Martelli from the starting team.

Because of the team's outstanding performance Tom, John, and Tony were selected to play in the All-County Soccer game against Putnam County.



TOM MORTON, "OLD RELIABLE"

SOCCER RECORD 1958			
R.N.H.S.		OPP.	
Sept. 26	10	Brunswick	0
Sept. 30	5	Concordia	2
Oct. 2	6	Scarsdale	6
Oct. 7	3	Sleepy Hollow	2
Oct. 9	8	Bronxville	0
Oct. 14	6	Ossining	2
Oct. 17	11	White Plains	0
Oct. 21	2	Bronxville	1
Oct. 24	13	Ossining	0
Oct. 28	2	Scarsdale	2
Oct. 30	0	Sleepy Hollow	2
Nov. 4	10	ALL STAR GAME	3
Nov. 6	11	Brunswick	0



JOHN SUTPHEN, A FINE BOOTER





GOALIE, GIL GOODMAN



HUSTLING DON MOTHNER



DEFENSIVE STANDOUT, CHARLIE GREENE



BOB F. AND DON M. STEAL BALL FROM BRONXVILLE PLAYER



BALL HAWK, ROGER SIRLIN



TONY M. AND EBERHARD E. CLOSE IN ON BRONXVILLE GOAL





**VARSITY**

R. Hyra, L. Marciante, G. Goodman, H. Davenport, W. Landsiedel, J. McMahon, D. Mothner, R. Knopf, A. Tallevi. Kneeling: Coach Hasley.

# BASKETBALL

Despite the discouraging record compiled by the 1958-59 basketball team, the RNHS cagers were able to continue a "never-say-die" attitude throughout the season. Because of this fact, the Panthers were respected in every game they entered.

The Panthers opened the season on their new basketball court in fine fashion by winning over Harrison, which delighted their ardent fans.

However, hampered by a lack of experience, hard luck, and beset by illness, the hoopsters were able to win only 5 out of eighteen games.

Graduating from the ranks this year will be Lou Marciante, Bill Landsiedel, Gil Goodman, Don Mothner, Richie Knopf, Jim McMahon and Henry Davenport. But, coming up are some very high scoring underclassmen who, without a doubt, will supply RNHS with a victorious team next year.

**JUNIOR VARSITY AND FRESHMEN**



Row 1: M. Brown, J. Brooks, N. Kay, W. Gunn, R. Morrone, K. Purdy, B. Evangelista.  
 Row 2: Freshman Coach Barondes, P. Stockmann, J. Simon, E. Puritz, K. Harran, B. Betker, J. V. Coach Dougherty.  
 Row 3: P. Silver, R. Strilowich, S. Patafio, S. Simmons, H. Polcek, R. Iannarelli, R. Lanza.

**VARSITY & J. V. SCHEDULE**

	Opponent	RNHS
*Eastchester	41	38
Harrison	33	37
Rye	48	29
Gorton	60	43
Lincoln	73	52
*Bronxville	49	38
Commerce	43	69
*Tuckahoe	66	46
*Gorton	55	21
Edgemont	46	40
*Lincoln	59	49
*Ardley	54	34
*Harrison	53	35
Tuckahoe	52	48
*Commerce	46	55
Bronxville	44	46
St. Mary's	50	52
*Rye	52	38
*Away Game		





Lou Marciante  
OUR VETERAN PLAY MAKER



Bill Landsiedel  
POWERFUL UNDER THE BOARDS



Gil Goodman  
A CONSISTENT AND HUSTLING  
BACKCOURT MAN



Jim McMahon outsmarts his opponent for two points in the Edgemont game.



Lou Marciante hits for two on a fast break, Edgemont vs. Rye Neck.







TRACK TEAM: Row 1: H. Davenport, B. Pelton, B. Landsiedel, J. Warren, E. Mahrlig, M. Forman, C. Greene. Row 2: G. Szanto, K. Man, B. Munter, C. Carson, P. Wilkinson, K. Hanson, P. Fink, K. Heath, B. Park, D. Doern,

J. Morison. Row 3: C. Banks, R. Finelli, R. Litchfield, R. Nicks, R. Fink, G. Gillette, R. Chmelecki, J. Smirga, B. Dudley, M. Carrington, M. Wild, T. Schneider.

## TRACK 1958

### FUTURE OLYMPIC WINNERS

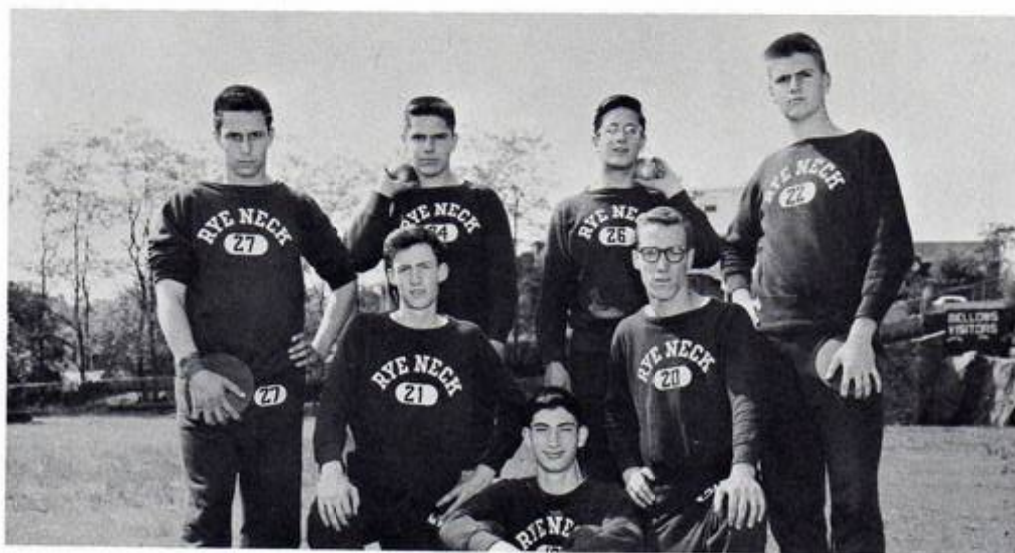
The 1958 track season was one of the most successful seasons run by our school in recent years. Of the fine teams faced, Rye Neck was able to down four. Its only defeat was suffered at the hands of a very strong Rye team who squeezed through the relay to win by the small margin of two points.

This year under the able coaching of Mr. Morgan and Mr. Hazard two boys were able to break the record for the mile run. First, the record was seized by Bill Pelton and later snatched from him by

Henry Davenport, running a fine 4:38.4.

Next season promises to be an equally promising season with the return of many top lettermen. Perhaps this year will be marked by the setting of many new records, not only in the running class, but also in the weight events.

We know that this year Rye Neck will be well represented on the cinder track and the Class of '59 would like to wish the track team luck in its future events.



SENIORS: Sitting: M. Forman. Kneeling: B. Pelton, H. Davenport. Standing: E. Mahrlig, J. Warren, C. Greene, B. Landsiedel.





MAURICE WAITING FOR THE GUN



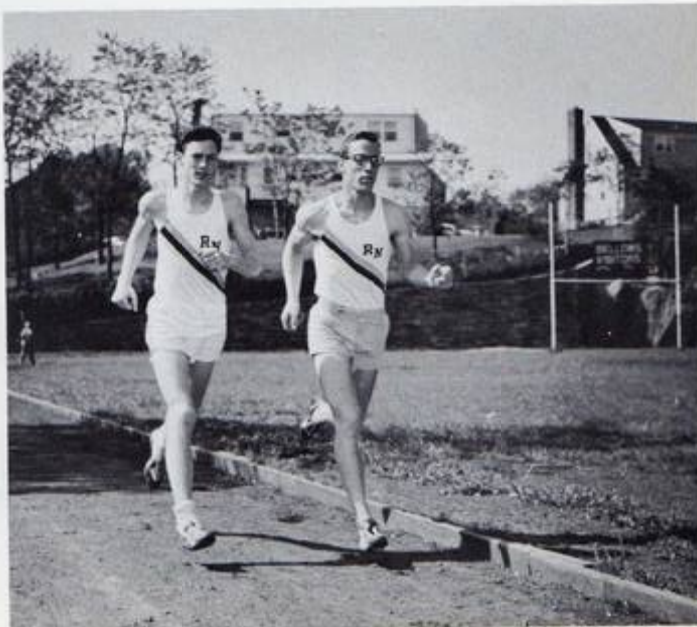
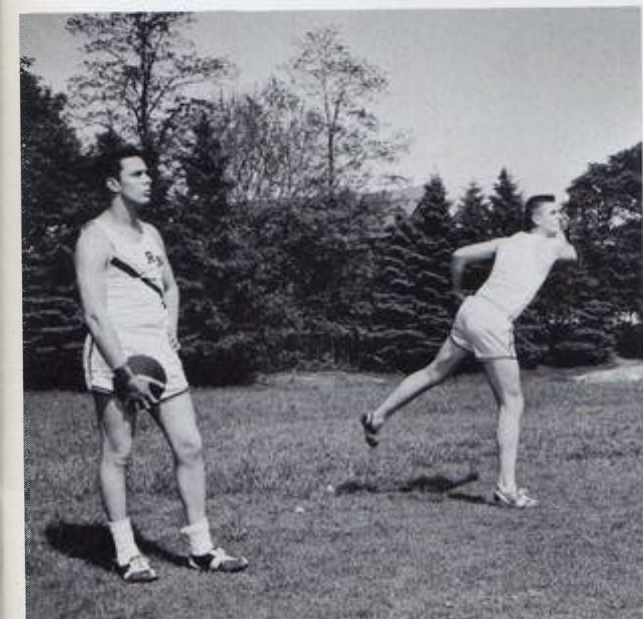
JIM AND CHARLIE TRYING FOR THE RECORD WITH THE SHOT

TRACK SCHEDULE — 1958

April 24	..... Rye Neck 65½	Harrison	..... 38½
May 1	..... Rye Neck 54	Eastchester	..... 39
May 8	..... Rye Neck 51	Pleasantville	..... 48
May 10	..... Rye Invitation		3rd. place
May 15	..... Rye Neck 51	Rye	..... 53
May 22	..... Rye Neck 67	Hastings	..... 37
May 24	..... Eastchester Inv.		3rd. place
May 26	..... Class C Meet		3rd. place
June 3	..... S.W.I.A.C. Meet		3rd. place



COACH HAZARD AND COACH MORGAN







VARSIITY: Row 1: L. to R.: L. Giancola, B. Patterson, R. Knopf, G. Goodman, J. McMahon, J. Smith, L. Marciante, R. Bysse, J. Sutphen, B. Hance. Row 2: Coach O'Neill, H. Miller, B. Gunn, M. Scarangella, P. Marquard, W. Carrington, J. Duggan, Coach Sniadack.

## BASEBALL 1958

The Rye Neck Baseball team was plagued with sore pitching arms and rusty bats in 1958. Although the spirit was good, the loss of nine lettermen was quite a blow for the young team. The very unsuccessful season is however no indication of a lack of fine ball, playing on the part of a few. John Smith, Bud Patterson and Lou Marciante were fielding well and occasionally hitting along with Bob Bysse, Richie Knopf, Gil Goodman, John Sutphen, Jim McMahon, and Bill Gunn.

Errors also kept pitcher, Mike Scarangella on edge most of the time. Lack of experience probably accounted for this, however. With all but one letterman returning in '59, the team should enjoy a more favorable season. Certainly we would like to wish the team the best of luck for the coming year.



J. V. BASEBALL: Row 1: L. to R.: W. Schonfeld, J. Granett, P. Becker, B. Langerfeld, R. Fitts, T. Caucci, D. Acebal. Row 2: Coach O'Neill, B. Wellmann, M. Bonelli, J. Robbins, J. Brooks, S. Hefferon, Coach Sniadack.





RICHIE AND BOB TALK OVER NEXT PITCH



GIL AND LOU, TWO SLUGGING OUTFIELDERS

BASEBALL SCHEDULE

Dobbs Ferry .....	9	Rye Neck .....	6
Dobbs Ferry .....	13	Rye Neck .....	6
Bronxville .....	10	Rye Neck .....	0
Rye .....	10	Rye Neck .....	2
Pleasantville .....	8	Rye Neck .....	0
Hastings .....	3	Rye Neck .....	1
Bronxville .....	1	Rye Neck .....	0

Eastchester .....	7	Rye Neck .....	12
Rye .....	7	Rye Neck .....	1
Eastchester .....	8	Rye Neck .....	7
Edgemont .....	5	Rye Neck .....	2
Pleasantville .....	10	Rye Neck .....	2
Harrison .....	5	Rye Neck .....	4
Harrison .....	13	Rye Neck .....	2
Hastings .....	12	Rye Neck .....	1



JOHN AND BUD, OUR KEYSTONE COMBINATION



JIM AND JOHN, TWO FINE BALLPLAYERS





**VOLLEYBALL**

1st Row: Dawn F., Ronne G., Virginia B.  
 2nd Row: Vanessa P., Marion M., Joanne B.  
 3rd Row: Jill H., Joyce Z., Diana D. 4th  
 Row: Dorothy K., Barbara A.

GO DOERN GO! . . . GET IT OVER

# GIRLS SPORTS



**BADMINTON**

L. to R.: Dorothy K., Diana D., Joyce Z., Joanne B.

JOYCE, WHERE'S THE BIRDIE? . . . HEY JOANNE, THIS ISN'T ACROBATICS!





**BASKETBALL**

L. to R.: Dawn F., Ronne G., Joanne B.,  
Diana D., Marion M., Barbara A., Joyce Z.  
READY AND WAITING, GET THAT JUMP!



**ARCHERY**

L. to R.: Dorothy K., Dawn F., Vir-  
ginia B., Marion M.

LOOKING TO SEE WHO HIT THE  
BULL'S EYE. "IT'S MINE!"



**FIELD HOCKEY HONOR TEAM**

Row 1: (lower) L. to R.: Ann H., Diana D., Vanessa P., Bonnie A., Joanne B., Paula U., Roberta R.  
Row 2: (upper) Joyce Z., Dana H., Marjorie F., Ronne G., Diane W., Barbara D., Virginia B.

WATCH THOSE STICKS . . . A MOST DANGEROUS GAME